



BIOMASS POWER PLANT MJÖLBY

SWEDEN

Mjölby-Svartådal Energi AB is building a co-generation power plant with a annual capacity of 100 GWh of district heat and 45 GWh of electricity in Mjölby, Sweden. The 35 MW biomass power plant will be fueled by wood. The power plant will produce the base load for the network during autumn, winter and spring. The power plant will be in commercial operation with autumn 2015.

ANDRITZ Energy & Environment (AE&E) is the general contractor for the power plant, incl. all construction works above ground. On behalf of AE&E, convex ZT GmbH is responsible for the civil works tender and entire civil works detail design. In order to fulfill the tight construction programme, the use of pre-cast reinforced concrete elements was prioritised as much as possible.

Owner:

Mjölby-Svartådal Energi AB, Sweden

General contractor:

AE&E, Austria

Capacity:

35 MW

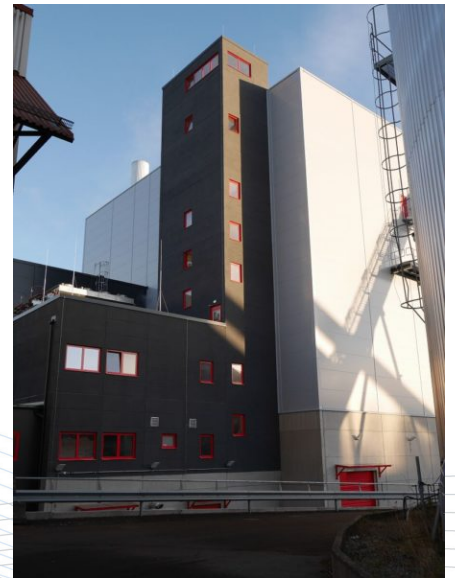
Start of construction:

2013

Start of commercial operation:

2015

Photos:



AE&E, A. Moritz

