



## EXPRESSWAY S36, BRIDGE REHABILITATION

### AUSTRIA

On behalf of ASFINAG Bau Management GmbH, convex ZT GmbH carried out the complete tender and detail design for the road and bridge rehabilitation for the section Feistritz – Zeltweg Ost, km 12,603 – km 23,626, RFB Scheifling of the S36 Murtal Expressway. The general rehabilitation was carried out in several steps in the years 2018 – 2019.

The rehabilitation measures of the 15 bridges depending on the damage pattern of the individual objects as well as their repair concept were:

- Repair without structural reinforcement
- Repair by means of structural reinforcement
- Repair by means of conversion to semi-integral system without structural reinforcement
- Rehabilitation by means of conversion to semi-integral system and structural reinforcement

The longest of the rehabilitated bridges were 96 m (K9 – Ingeringbachbrücke, 4 spans), 56.5 m (K8 Spielbergbrücke, 3 spans) and 53.0 m (K1 Raßnitzbrücke).

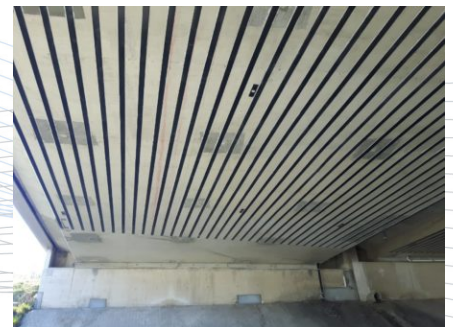
The roadway rehabilitation included approx. 11 km of the Scheifling directional roadway including four junctions. Poltnigg & Klammer ZT GmbH was commissioned by convex ZT GmbH to design the road rehabilitation.

**Client:**

ASFINAG Bau Management GmbH, Austria

**Location:**

S36 Murtalstrasse



**Objects:**

15 bridges with a length up to 96 m

**Length of road repair:**

approx. 11,000 m / 4 junctions

-

**Photos:**

convex ZT GmbH