

DESIGN IN 3D

WORLDWIDE

3D Design for Formwork and Reinforcement drawings by convex ZT GmbH are prepared throughout the world. Collision control in plant design is carried out by placing the 3D information of the Object and Formwork drawings directly in the overall plant model. Hence, building design by convex ZT GmbH is fully compliant with BIM (Building Information Modeling).

Reinforcement drawings

Reinforcement design in 3D enables fault-free design, particularly in the case of heavily

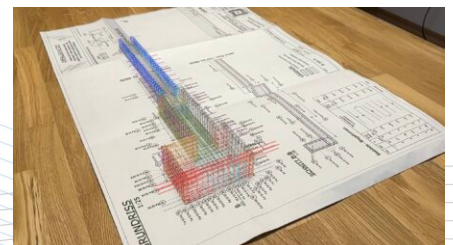
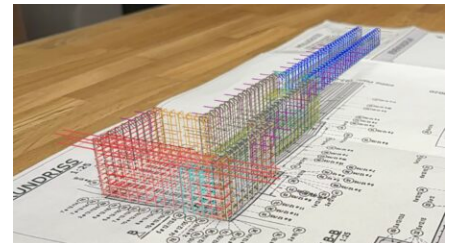
Data Exchange Format BIM: situations with complex geometries and many embedded parts, and facilitates the understanding of the reinforcement to be placed on the construction site. The

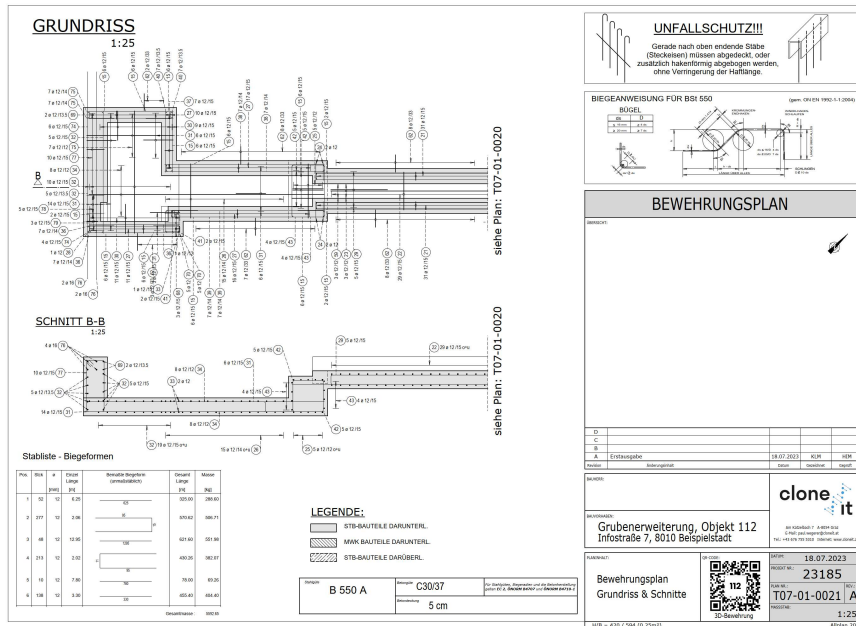
reinforcement drawings can be delivered as a 3D .pdf-file (activated by clicking in it) or as an e-reinforcement drawing (© convex ZT GmbH, see demonstration movie).

Used Software:

AUTODESK Revit

convex ZT GmbH is currently developing the app myCVX on behalf of convex ZT GmbH, with which the reinforcement inspection on the construction site will be fully digital. Currently, all formwork and reinforcement drawings from convex ZT GmbH are provided with a QR code, which, when called up on the construction site using a mobile phone, leads directly to the 3D model of the reinforcement after a security query. Try it yourself: simply scan the QR code in the reinforcement drawing below and view the 3D model of the reinforcement.





Download **3D reinforcement drawing** and activate by clicking in

You are currently viewing a placeholder content from **YouTube**. To access the actual content, click the button below. Please note that doing so will share data with third-party providers.

[More Information](#) [Unblock content](#) [Accept required service](#) and [unblock content](#)