



COAL FIRED POWER PLANT GÖLBAŞI

TURKEY

GEP GmbH is erecting a 150 MW coal fired power plant in Gölbaşı, Turkey. The power plant will be situated close to the Gölbaşı coal mine, where lignite coal is extracted in open pit mining. The applied fluidised bed boiler technology shall ensure the compliance with the emission limit values without the erection of a flue gas desulphurisation unit. The cooling water will be taken from the nearby river Göksu.

On behalf of GEP GmbH, convex ZT GmbH, Austria and convex Limited Şirketi, Turkey are responsible for the project development in close co-operation with the project management of the owner. The consultancy works are related to the coal mine evaluation, the permit procedures and the power plant design. The coal mine reserve calculation and the environmental impact assessment study are made by specialised companies under the steering of convex_AT and convex_TR, the power plant design is developed together by convex_AT and Pöyry Energy GmbH.

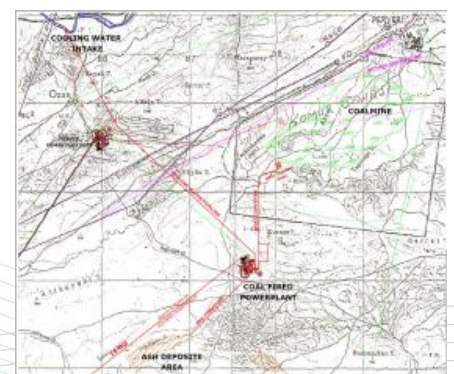
Owner:

GEP GmbH, Austria

Technology:

Fluidised bed Boiler

Capacity (electrical):



150 MW

—

Photos:

E. Kemaloglu resp. convex ZT GmbH

