



CCPP BUCHAREST

ROMANIA

The combined cycle power plant generates 186 MW of electricity with a GE gas turbine (110 MW), an ALSTOM boiler and a SKODA steam turbine (76 MW). The system is the first combined power plant in Romania, located at the site of the existing Bucuresti Vest power plant and is being erected by ELCEN S.A., a Romanian joint-stock company.

convex carried out the entire civil design in cooperation with our local partner, ISPE. The high seismicity of the location required earthquake-resistant design, considering all local codes and regulations. Suitable water retention measures become necessary due to the raised ground water level (a few meters) after the catastrophic rainfalls in the summer of 2005. The dynamically loaded turbine foundations required a re-design, applying vibration isolation to prevent liquefaction of the now water-saturated fine sands at the foundation level.

Client:

Electrocentrale Bucuresti S.A., Romania

General contractor:

VA TECH Hydro, Austria

Structural steel:

900 to

Concrete:

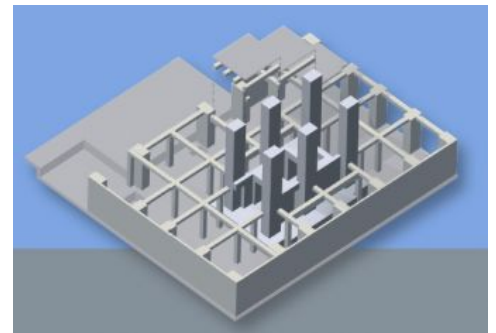
10.500 m³

Reinforcement:

1.450 to

Overall costs:

€ 135 mill.



Construction costs:

€ 8 mill.

Completion:

2007

–

Visualization:

F. Niess

Photos:

T. Uzunoglu